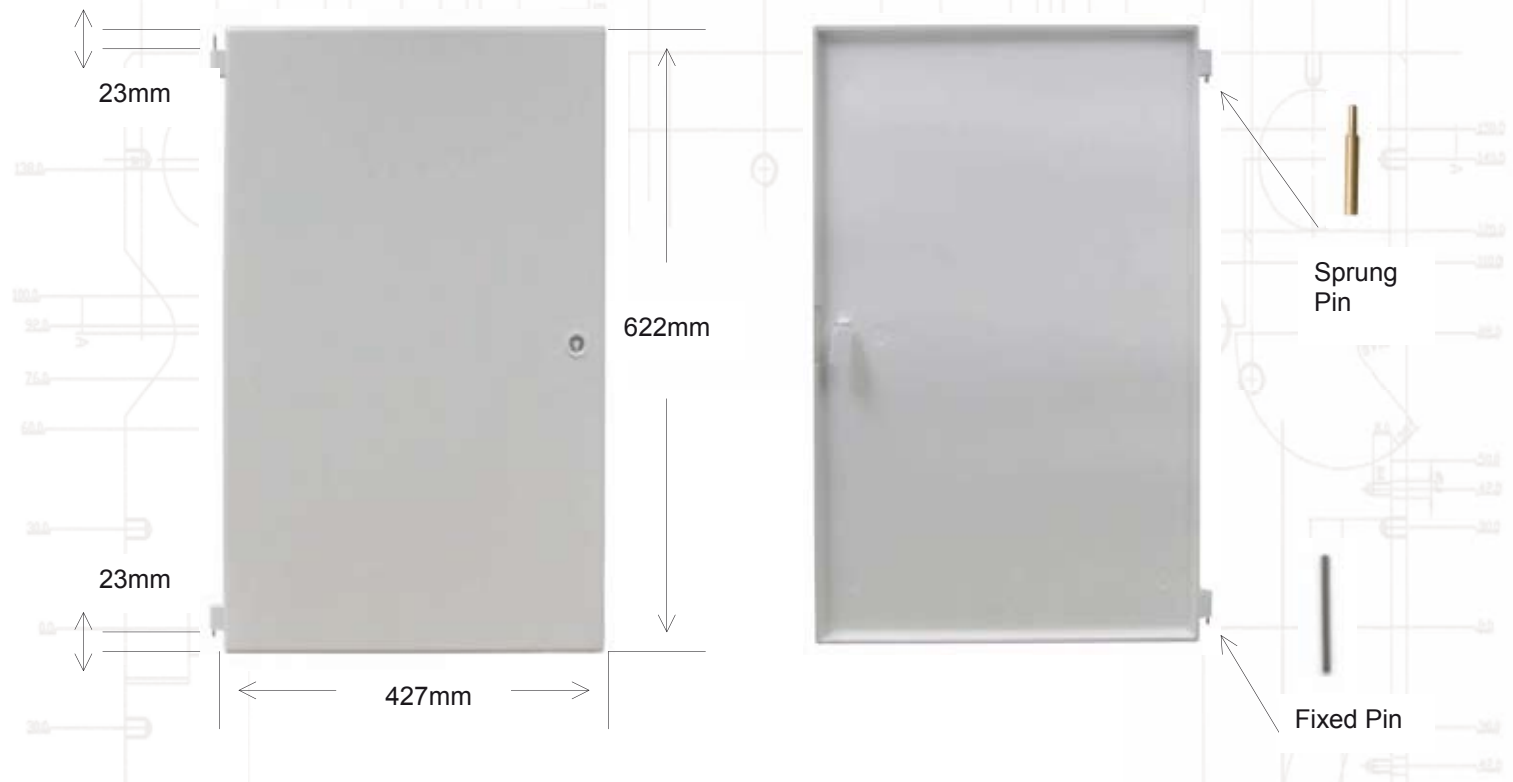


MODEL REF: M00040

PRODUCT CODE: IS0019

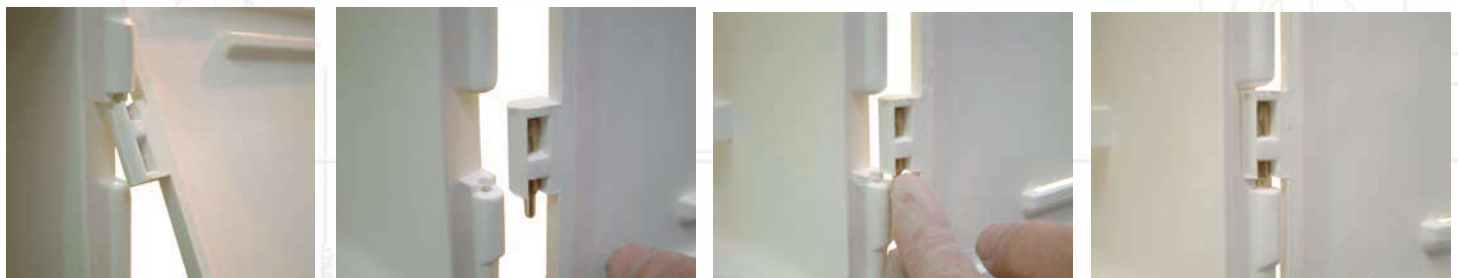
**REPLACEMENT DOOR FOR THE MEDIUM 'PERMALI'  
FLUSH FITTED (BUILT-IN) ELECTRIC METER BOX**

Formerly SM60001



**FITTING INSTRUCTIONS:**

1. Position the bottom hinge pin in the recess of the box.
2. With the bottom pin in place, position the top hinge pin next to the top recess of the box.
3. Push the sprung part of the brass pin hinge upwards and hold whilst sliding the pin into position.
4. Allow the sprung part of the brass pin hinge to slot into the recess.



Visit [meterboxes.co.uk](http://meterboxes.co.uk) for information about our range of meter boxes and replacement parts

Architects • Builders • Designers • Specifiers • Contractors • Housing Associations • Local Authorities



New Street Biddulph Moor Stoke on Trent ST8 7NL Tel: 01782 375450 Fax: 01782 522652  
sales@mitras-composites.co.uk <http://www.meterboxes.co.uk> <http://www.mitrascomposites.co.uk>

REGISTERED OFFICE: NEW STREET, BIDDULPH MOOR, STOKE-ON-TRENT - REGISTERED No. 364912 ENGLAND