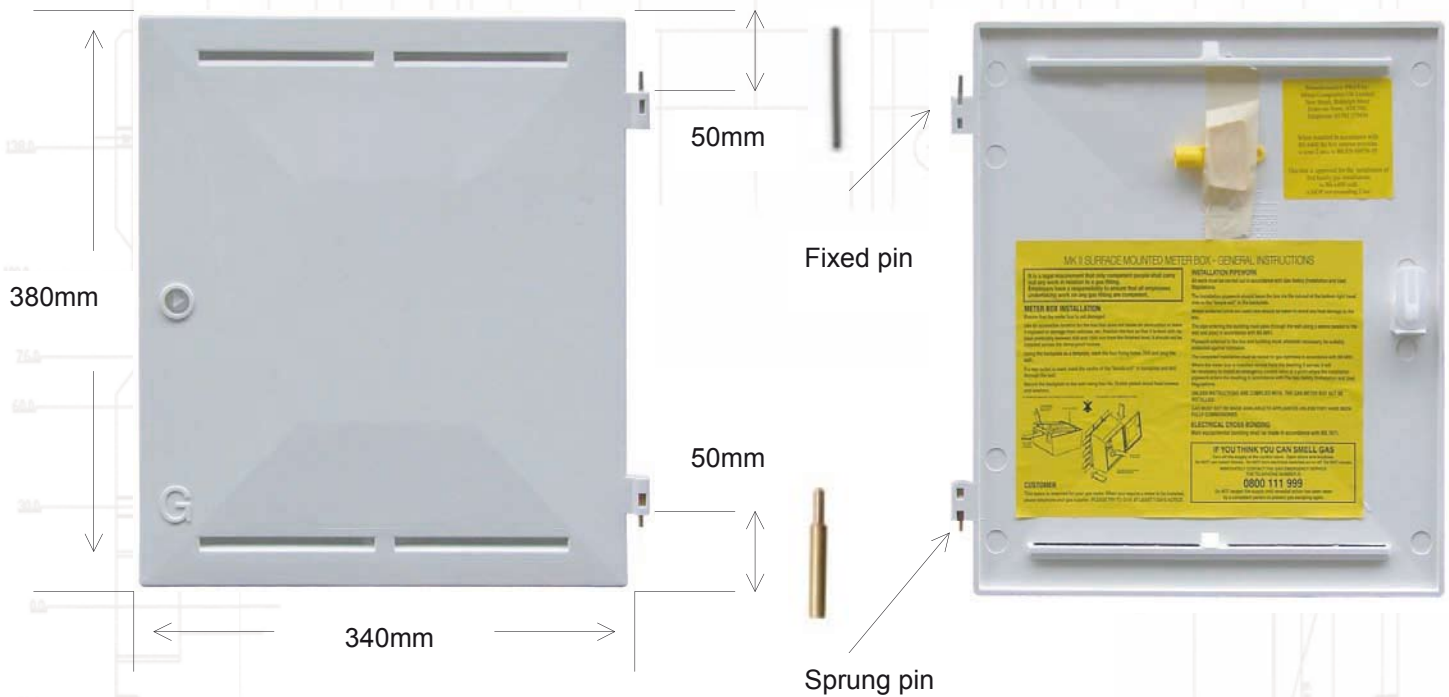


MODEL REF: G70037

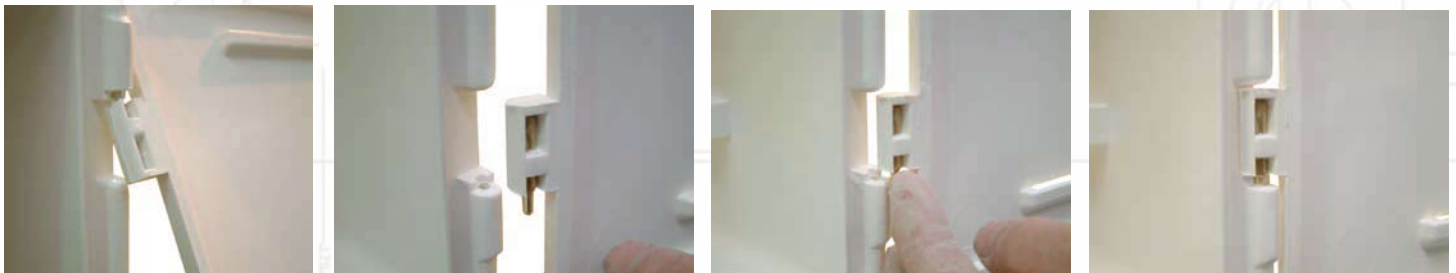
PRODUCT CODE: IS0006

**REPLACEMENT DOOR FOR THE CURRENT
(MK2) SURFACE MOUNTED GAS METER BOX**



FITTING INSTRUCTIONS:

1. Position the top hinge pin in the recess of the box.
2. With the top pin in place, position the bottom hinge pin next to the bottom recess of the box.
3. Push the sprung part of the brass pin hinge upwards and hold whilst sliding the pin into position.
4. Allow the sprung part of the brass pin hinge to slot into the recess.



Visit meterboxes.co.uk for information about our range of meter boxes and replacement parts

Architects • Builders • Designers • Specifiers • Contractors • Housing Associations • Local Authorities



New Street Biddulph Moor Stoke on Trent ST8 7NL Tel: 01782 375450 Fax: 01782 522652
sales@mitras-composites.co.uk <http://www.meterboxes.co.uk> <http://www.mitrascomposites.co.uk>

REGISTERED OFFICE: NEW STREET, BIDDULPH MOOR, STOKE-ON-TRENT - REGISTERED No. 364912 ENGLAND