

MODEL REF: G60030

PRODUCT CODE: IS0002

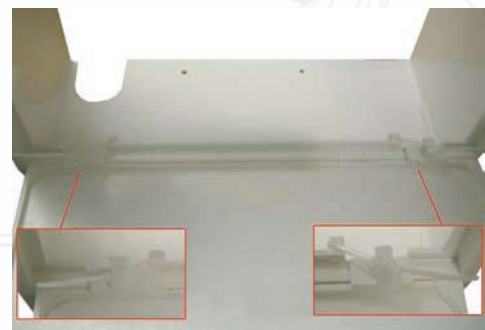
REPLACEMENT DOOR FOR THE OBSOLETE (MK1) SURFACE MOUNTED GAS METER BOX

Suitable for the gas meter box installed from the 1930's to the 1990's:



FITTING INSTRUCTIONS:

As an answer to the very old design of hinges, the replacement door is attached to the meter box with plastic cable ties. Undo the ties that are attached to the replacement door. Align the hinge mouldings of box and door, loop the cable ties through them. Do not tighten the ties too much, leave some play to allow the door to drop down. The excess tie may be trimmed.



Visit meterboxes.co.uk for information about our range of meter boxes and replacement parts

Architects • Builders • Designers • Specifiers • Contractors • Housing Associations • Local Authorities



New Street Biddulph Moor Stoke on Trent ST8 7NL Tel: 01782 375450 Fax: 01782 522652
sales@mitras-composites.co.uk <http://www.meterboxes.co.uk> <http://www.mitrascomposites.co.uk>

REGISTERED OFFICE: NEW STREET, BIDDULPH MOOR, STOKE-ON-TRENT - REGISTERED No. 364912 ENGLAND